

# EXCELTECH

## LIQUID FILLING MACHINE



# EXCELTECH LIQUID FILLING MACHINE (L.F.M.)

EXCELTECH MODEL L.F.M. comes with 3 models of a capacity of 300 ml, 600 ml and 1,250 ml. It is designed for filling media similar to water or viscous liquid, accurately to a controllable speed. It can be switched to a 100% manual or semi-auto control. Various types of filling nozzle can be used since these nozzles are changeable.

## PRODUCT FUNCTION:

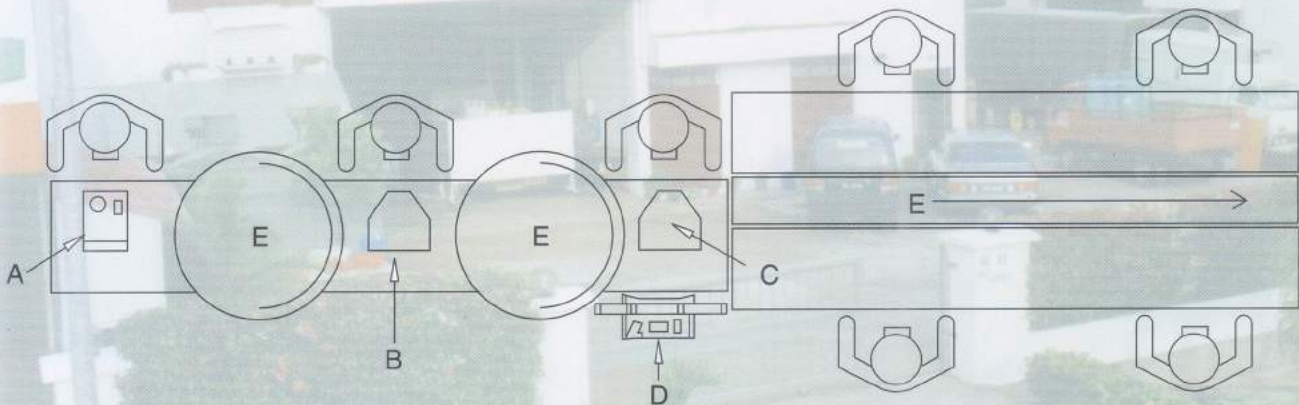
Exceltech Model L.F.M. is able to fill at minimum 750 to maximum 1000 containers per hour depending on volume of each container.

## EXCELTECH 充液機 (L.F.M.)

Exceltech 型號 L.F.M. 一共有三款，即容積 300 毫升、600 毫升和 1,250 毫升。此型號的設計，旨在填充水以至粘性液體的物質，操作精確，速度亦可以控制。既可全部 100% 用手操縱，又可為半自動操縱。由于充填咀可以互換，所以各種型類的瓶咀都可使用。

## 功能

Exceltech 型號 L.F.M. 每小時可以填充最少 750 至最多 1000 個容器，操作快慢，要視容量大小而定。



## AEROSOL PACKING MACHINE LAYOUT PLANT IN LINE

- A = LIQUID FILLING OR DESK-TOP LIQUID FILLING MACHINE
- B = CRIMPING OR DESK-TOP CRIMPING MACHINE
- C = SINGLE GASSER OR DESK-TOP GASSER MACHINE
- D = PROPELLANT PUMP (MK.1) OR (MK.2)
- E = CONVEYOR AND PACKING TABLE SYSTEM
- F = COMPLETION GOODS



## TECHNICAL SPECIFICATION

LENGTH	: 250 mm	COMPRESSED AIR REQUIRED (M <sup>3</sup> /min)	: 0.3m <sup>3</sup> /min (12.5 cu.ft)
WIDTH	: 400 mm	OF FREE AIR AT (kg/cm <sup>2</sup> )	: 4.5kg/cm <sup>2</sup> (60 p.s.i.)
HEIGHT	: 880 mm	ACCURACY	: ±0.02% of Maximum Volume
EXPORT BOX WEIGHT (APPROX.)	: 50 – 60 kg	CONTACT PARTS	: 304 Grade Stainless Steel P.T.F.E. Viton, P.V.C. & Telfon
EXPORT BOX SIZE (APPROX.)	: 560 x 400 x 950		



## EXCELIN SDN. BHD.

(WEST MALAYSIA)

17, Jalan TPP 1/19, Taman Industri Puchong,  
Bt. 12, Jalan Puchong, 47100 Puchong, Selangor, West Malaysia.

Tel: +603-5721187 Fax: +603-5725587

E-mail: smeij@pc.jaring.my http://excelin.asiaep.com